

ONLINE PUBLIC AUCTION

Irwin + Lyle Thermoformers - Container Molds - Equipment

FRUIT-PAK Manufacturing + Sales INC

1111 Citris St., Riverside CA

Bids open: Tues. Jan 10, 11AM PT

Bids close: Thurs. Jan 12, 10AM PT

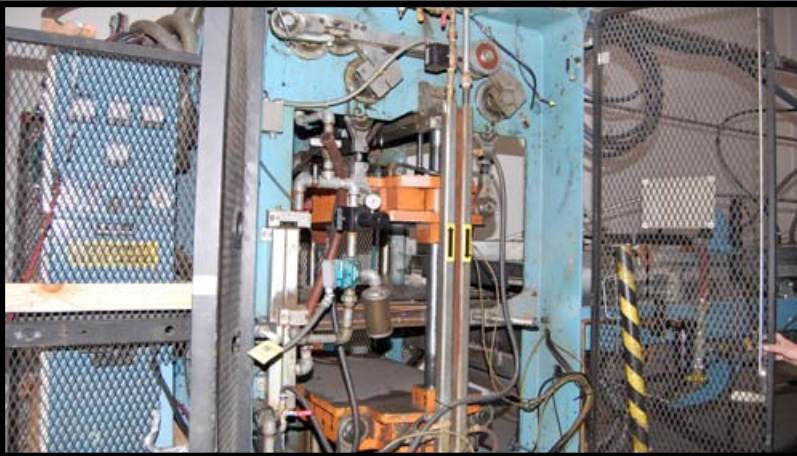
Join our e-mail list and register to bid online at www.josephfinn.com



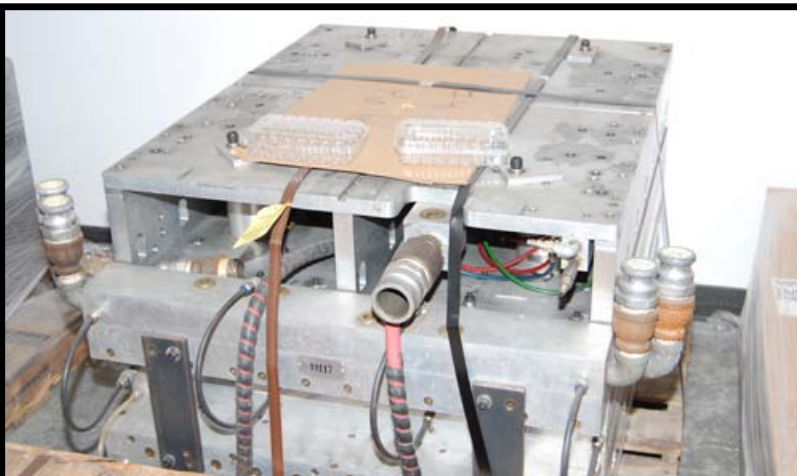
JOSEPH FINN CO., INC.
— AUCTIONEERS AND APPRAISERS —

188 NEEDHAM STREET • NEWTON, MA 02464

TEL 617.964.4886 • FAX 617.964.7827 • WWW.JOSEPHFINN.COM



IRWIN MINI MAG 44 THERMOFORMER



1 OF 15 FRUIT AND VEGETABLE CONTAINER MOLDS

Directions to Plant: Plant is 71 miles from Los Angeles Int'l Airport. From Airport Take S. Sepulveda Blvd to I-105E, 17 miles to I-605N, 10 miles to CA-60E/Pomona Fwy, 41 miles to exit 53B I-215N, 1/2 mile to exit 35, Columbia Ave., Right on E La Cadena Dr., 1st Left on Columbia Ave, Left on Iowa Ave, 2nd Right on Citris St.

TO ARRANGE INSPECTION CONTACT: KEN IVEY
TEL #: 949-887-1302 EMAIL: KENFRUIT-PAK@COX.NET

Important Notice: All items sold at this sale are sold without warranty or representation whatsoever, INCLUDING WITHOUT LIMITATION, any warranty or representation as to description, title or capacity. All items are sold as is where is, auctioneer expressly disclaims the implied warranties or merchantability and fitness for a particular purpose.

Proxy Bid: Auctioneer will accept proxy bids for those unable to attend this sale. Bids must be accompanied by a deposit of 25% of bid in certified check or bank letter honoring payment with uncertified checks.

On-Line Terms: A 15% Buyer's Premium will apply. ALL bills are to be paid in full by Monday January 16 at Noon

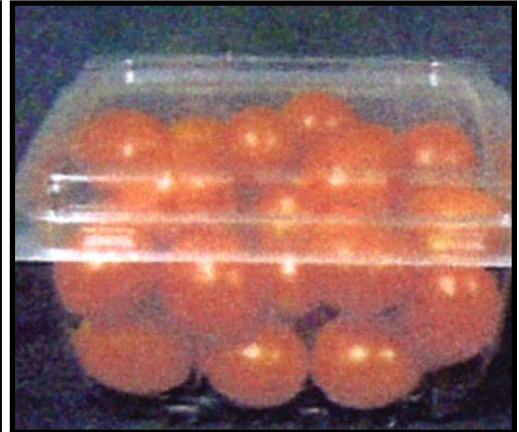
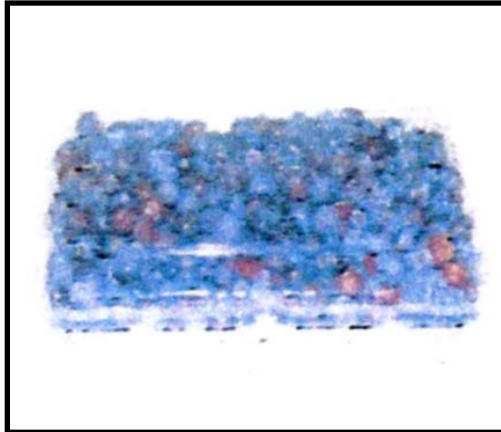
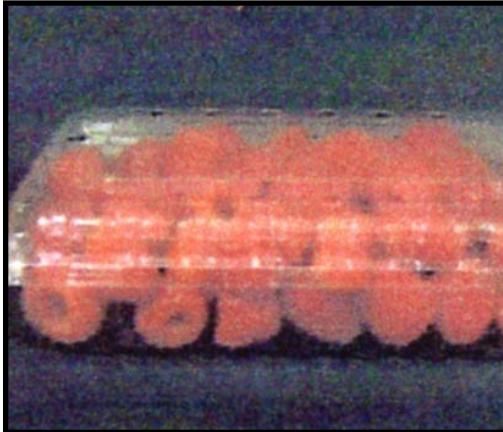
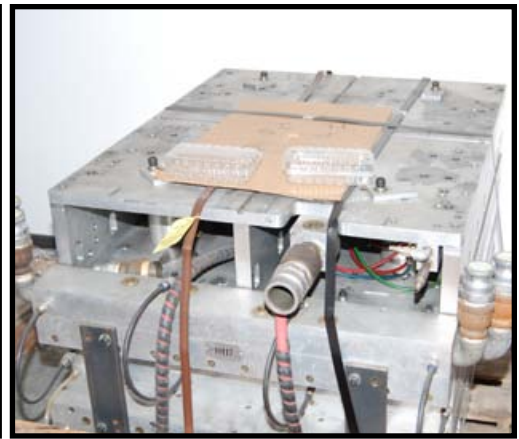
register to bid online
www.josephfinn.com



JOSEPH FINN CO., INC.
— AUCTIONEERS AND APPRAISERS —

188 NEEDHAM STREET • NEWTON, MA 02464

TEL 617.964.4886 • FAX 617.964.7827 • WWW.JOSEPHFINN.COM



CONTAINER MOLDS See Website for Complete Product Information and Product Photos for Each Mold & Container

7447 12-Cavity Water Cooled Clam Shell Mold, 32.8"x38.8", Will Run on Any 40" Thermoformer & Above Brown or Lyle, w/Inserts to Produce Heights from 1.5" to 3.5" in .25" Increments w/Matched Metal Trim Tool & Punch Die Sets on 6 Skids

9474 6-Cavity Water Cooled Clam Shell Mold, 33.8"x34.25", Will Run on 40" Thermoformer & Above Brown or Lyle w/Inserts to Produce Heights from 2" to 3.75" in .25 Increments, Matched Metal Tool & Die Sets on 3 Skids

7570 Molds Consisting of (1) 4-Pack (Bubble) Apple Clam Shell Mold, Contact Cooled, 8-Cavity, 34.5"x32.5", (1) 4-Pack Apple (Bubble) X-Large Clam Shell Mold, Contact Cooled, 8-Cavity, 84.5"x32.5", (1) 4-Pack Pear/Avocado (Bubble) Clam Shell Mold, Contact Cooled, 8-Cavity, 34.5"x32.5", 3 Molds, (1) Bottom, Matched Metal Trim Tool for Above 3 Molds on 4 Skids

2RT #2 Tray Mold, Water Cooled, 20-Cavity, 34.25"x36.75", Will Run on Any 40" & Above Brown or Lyle w/Matched Metal Trim Tool on 2 Skids

4RT Mold #4 Tray Mold, Contact Cooled, 8-Cavity, 21.4"x30.5", Matched Metal Trim Tool

#1150 Tray Mold, Water Cooled, 8-Cavity, 27"x26.75", Matched Metal Trim Tool on 2 Skids

6363 4-Pack (Bubble) Tomato Clam Shell Mold, Contact Cooled, 21-Cavity, 50.25"x42.5", Matched Metal Trim Tool on 2 Skids

7055 Molds Consisting of (1) 1 Lb. Cherry Clam Shell Mold, Contact Cooled, 12-Cavity, 40"x35.5", (1) 1 Lb. Tomato Clam Shell Mold, Contact Cooled, 12-Cavity, 40"x35.5", (1) 2 Lb. Cherry Clam Shell Mold, Contact Cooled, 12-Cavity, 40"x35.5", Matched Metal Trim Tool for Above on 4 Skids

1170 Molds Consisting of (1) 2 Lb. Cherry Clam Shell Mold, Contact Cooled, 9-Cavity, 50"x38.25", (1) 3 Lb. Cherry Clam Shell Mold, Contact Cooled, 9-Cavity, 50"x38.25", (1) 18 oz. Specialty Tomato Clam Shell Mold, Contact Cooled, 9-Cavity, 50"x38.25, Matched Metal Trim Tool for Above Molds

11035-175 Mold 9 Oz. Specialty Tomato Clam Shell Mold, Contact Cooled, 12-Cavity, 50"x38.25, w/Metal Trim Tool

1070-6A 6 Pack Apple (Bubble) Clam Shell Mold, Contact Cooled, 9-Cavity, 50"x38, Matched Metal Trim Tool

6 Oz. Specialty Tomato Mold, Contact Cooled, 16-Cavity, 35"x30", Matched Metal Trim Tool

5044 Pint Mold, Water Cooled, 8-Cavity w/Inserts for 1.75" to 3" Height, 23.7"x26.5", Matched Trim Tool & Punch Sets

8 Oz. Mushroom Till Inserts, 48-Cavity, 40"x42"

Lid Insert Mold for 5 Oz. Salad Tub, 9"x7", 10-Cavity w/Matched Metal Trim Tool (Need Tub Cavities & Mold Base)

Bids open: Tues. Jan 10, 11AM PT
Bids close: Thurs. Jan 12, 10AM PT

register to bid online
www.josephfinn.com

JOSEPH FINN CO., INC. 188 NEEDHAM STREET • NEWTON, MA 02464
— AUCTIONEERS AND APPRAISERS — TEL 617.964.4886 • FAX 617.964.7827 • WWW.JOSEPHFINN.COM

LYLE 40" THERMOFORMING LINE



THERMALCARE 10 TON CHILLER

LYLE THERMOFORMER

LYLE 40" Thermoformer, s/n DM-1811, Invensys Wonderwave Touch Screen Control, (Converted To Servo Drives), Lyle 40"x140" Cal-Rod Oven, (Converted To Servo Drives), **John Brown T300** Trim Press, 40", s/n 11077, Control, Feed Table, 3-Roll 40" Unwind Stand, Pneu. Punch Station
Special Built 2-Roll Pressure Sensitive Labeler for 40" **LYLE** Thermoformer

FORKLIFTS & PLANT EQUIP.

INGERSOLL RAND SSR-EP100 100 HP Rotary Air Compressor, s/n CK819U98175 (1998)

2001 **HYSTER** E55XM2-33 4850 Lb. Elec. Forklift, s/n F108V21599X, 206" Lift, Side Shift, w/Trojan Battery Charger

CLARK GS15 2700 Lb. LPG Forklift, s/n G127-0029-7115FA, 188" Lift, 4066 Hrs.

COFFING 2-Ton Elec. Hoist, Pendant Control, Power Trolley

24' Long x 10' High Overhead Gantry Structure, 5'x5' Dock Plate, 5500 Lb. Hyd. Pallet Jack



JOSEPH FINN CO., INC.
— AUCTIONEERS AND APPRAISERS —

188 NEEDHAM STREET • NEWTON, MA 02464
TEL 617.964.4886 • FAX 617.964.7827 • WWW.JOSEPHFINN.COM



INGERSOLL RAND 100 H.P COMPRESSOR



IRWIN 50 CHESAW GRINDER

IRWIN THERMOFORMER

IRWIN Mini-Mag 44 (Runs 50") AF-RH Thermoformer, s/n 387, (Converted To Servo Drives), **IRWIN** HT-RH Mod. 44-200VL 44"x200" Cal-Rod Oven, s/n 2452, (Converted To Servo Drives), **IRWIN** TP-RH Mod. 44-14 Trim Press, s/n 2267, Feed Table, 50" 3-Roll Unwind Stand, Pneu. Punch Station

Special Built 3-Roll Pressure Sensitive Labeler for 50" **IRWIN** Thermoformer

PLASTIC EQUIP.

THERMALCARE AQ0A0604 10-Ton Accuchiller, s/n 97300019803

AEC NXGW010 10-Ton Chiller, 10 HP, s/n 90E305

IRWIN CS-LH Mod. 50.375 50" Chesaw Grinder, s/n 2832, w/Cyclone

BROWN 40" 10 HP Under Trim Press Grinder

BUSCH RA0630-B007-1001, 25 HP Vacuum Pump, s/n C2184, w/Horiz. Tank

BUSCH RC0160-B032-1001, 7.5 HP Vacuum Pump, s/n C9341, w/Tank

FRUIT-PAK Manufacturing + Sales INC

Bids open: Tues. Jan 10, 11AM PT - Bids close: Thurs. Jan 12, 10AM PT



HYSTER 4850 LB. LPG FORKLIFT

IRWIN MINI MAG 44 THERMOFORMING LINE

